

## commercial controls

### Building Automation Systems



i-Vu® Building Management



BACnet® Controllers



Carrier Comfort Network Controllers



Sensors



Thermostats

## chillers

### Air-Cooled



AquaSnap® 30RA Scroll Chillers  
10 to 150 Tons (50 & 60Hz)



AquaSnap® 30RB Scroll Chillers  
60 to 390 Tons



AquaForce® 30XA Screw Chillers  
80 to 500 Tons



AquaSnap® 30RAP with Greenspeed®  
Intelligence Scroll Chillers  
10 to 60 Tons



AquaSnap® 30RB with Greenspeed®  
Intelligence Scroll Chillers  
80 to 300 Tons



AquaForce® 30XV with Greenspeed®  
Intelligence Screw Chillers  
140 to 500 Tons (50 & 60Hz)



AquaForce® 30XV Screw Chillers with  
Waterside Economizer  
140 to 500 Tons (50 & 60Hz)  
HFC-134a  
Meets ASHRAE 90.1-2016 Requirements  
Toward Incorporating Waterside Economizer

## chillers continued

### Water-Cooled



AquaEdge® 19DV Advanced  
Two-Stage Compression with  
Greenspeed® Intelligence  
350 to 800 Tons



AquaEdge® 19MV Advanced  
Two-Stage Compression with  
Magnetic Bearing and  
Greenspeed® Intelligence  
300 to 700 Tons



AquaEdge® 19XR(V) Constant- or  
Variable-Speed Centrifugal Chillers  
Single-Stage  
200 to 1,600 Tons



AquaEdge® 19XR(V) Constant- or  
Variable-Speed Centrifugal Chillers  
Two-Stage  
600 to 3,400 Tons



AquaEdge® 23XR(V) Variable-Speed  
Screw Chillers with Greenspeed®  
Intelligence  
175 to 300 Tons



AquaEdge® 23XR(V) Variable-Speed  
Screw Chillers with Greenspeed®  
Intelligence  
250 to 550 Tons



AquaForce® 30XW Screw Chillers  
150 to 400 Tons



AquaForce® 30HX Screw Chillers  
75 to 265 Tons



AquaSnap® 30MP Scroll Chillers  
16 to 71 Tons



AquaEdge® 17DA Open-Drive  
Centrifugal Chillers  
Motor or Steam Turbine Driven  
3,000 to 5,500 Tons

## air-handling units

### Central Station Air Handlers



Aero® 39M  
1,500 to 60,500 cfm



Aero® 39L  
1,800 to 15,000 cfm



Aero® 39S  
400 to 8,500 cfm



Carrier Custom 39CC



Carrier OptiClean™ Dual-Mode  
Air Scrubber & Negative Air  
Machine FN1AAF  
600 to 1,500 cfm

## air terminals

### Overhead



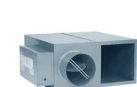
Axis™ 35E Single Duct  
VAV Terminals  
45 to 7,100 cfm



Axis™ 35J Retrofit Terminals  
40 to 3,700 cfm



Axis™ 35K Bypass Terminals  
110 to 4,400 cfm



Axis™ 35L,N Dual Duct  
VAV Terminals  
50 to 7,100 cfm



Axis™ 45K/N Series/Parallel Quiet  
Flow Fan-Powered Terminal Units  
for VAV Systems  
90 to 3,900 cfm

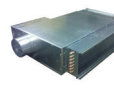


Axis™ 45J/M Series/Parallel  
Standard Flow Fan-Powered  
Terminal Units for VAV Systems  
90 to 3,900 cfm

## air terminals continued



Axis™ 45Q/R Series/Parallel  
Low-Profile Fan-Powered  
Terminal Units for VAV Systems  
100 to 2,000 cfm



Axis™ 45Q DOAS Terminals  
90 to 1,550 cfm

## fan coils



AirStream™ 42B Belt Drive  
600 to 4,000 cfm



AirStream™ 42C Horizontal  
200 to 1,200 cfm



AirStream™ 42V Vertical  
200 to 1,200 cfm



AirStream™ 42D Ducted  
600 to 2,000 cfm



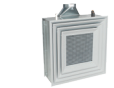
AirStream™ 42S Stack  
300 to 2,000 cfm

## Hydronic Cassette Fan Coil Units



AirStream™ 42WKN Hydronic  
Cassette Fan Coil Units  
0.75 to 3 Tons

## Induction Chilled Water



ActivAIR™ 36IB  
Induction Beams  
70 to 1,285 cfm



WeatherMaster® 36S  
Induction Air Terminals  
20 to 130 cfm

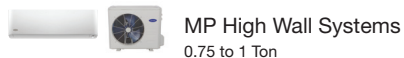
## Unit Ventilators



AirStream™ 40UV,  
UH Unit Ventilators  
500 to 2,000 cfm

## split systems

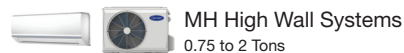
### Ductless Systems, Single Zone



**MP High Wall Systems**  
0.75 to 1 Ton



**38MARB Heat Pumps**  
0.75 to 3 Tons  
**40MAHB High Wall**  
**40MBCQ Cassette**  
**40MBDQ Ducted**  
**40MBFQ Floor Consoles**



**MH High Wall Systems**  
0.75 to 2 Tons

### Ductless Systems, Multi-Zone



**MGR Systems**  
Up to 5 Zones  
1.5 to 4 Tons

### Ductless Systems, Light Commercial

**RAV\*AT**  
1.5 to 3.5 Tons  
**RAV\*KRT High Wall**  
**RAV\*UT Cassette**  
**RAV\*BT Ducted**  
**RAV\*CT Underceiling**

**MBR Ducted Systems**  
3 to 5 Tons

**24AHA4 Cooling Only**  
**25HHA Heat Pumps**  
1.5 to 5 Tons  
**MK\*B High Wall**  
**MK\*C Cassette**  
**MK\*F Underceiling**

### Carrier Variable Refrigerant Flow Systems



**38VMH-1P Heat Pumps**  
3 to 5 Tons  
**38VMH Heat Pumps**  
6 to 36 Tons  
**38VMR Heat Recovery**  
6 to 28 Tons  
**40VM Indoor Units**  
0.6 to 8 Tons

## split systems continued

### Toshiba Carrier Variable Refrigerant Flow Systems



**MCY7 Heat Pumps**  
3 to 5 Tons  
**MMYH Heat Pumps**  
6 to 38 Tons  
**MMYF-1P Heat Recovery**  
6 and 12 Tons  
**MMYF Heat Recovery**  
6 to 38 Tons  
**MM-AP Indoor Units**  
0.6 to 8 Tons

### Condensing Units, Air-Cooled



**Performance™ 24ACB**  
1.5 to 5 Tons



**Gemini® Select 38APD/S**  
25 to 130 Tons



**Gemini® 38AUZ/D**  
6 to 20 Tons



**Gemini® 40RUA/Q/S**  
6 to 30 Tons

### Heat Pump Systems



**Gemini® 38AUQ**  
6 to 20 Tons

### Condensers, Air-Cooled



**Outdoor Air-Cooled Condenser 09AZ**  
90 to 200 Tons



**Indoor Air-Cooled Condenser 09XC**  
5 to 20 Tons



**Gemini® Select 09DP**  
18 to 130 Tons

# A World of Comfort

## A Quick Reference Guide to Sustainable Building Solutions

## packaged products

### Packaged Rooftop Units



**WeatherExpert® 48LC, 50LC**  
3 to 23 Tons (VAV available 6 to 23 Tons)



**WeatherExpert® with ecoblue™ technology 48JC, 50JC**  
3 to 5 Tons



**WeatherMaster® 48HC, 50HC**  
3 to 25 Tons (3 to 5 Tons, Select Models)  
**WeatherMaster® 50HCQ**  
6 to 10 Tons



**WeatherMaster® with ecoblue™ technology 48GC, 50GC, 50GCQ**  
3 to 5 Tons



**WeatherMaker® 48TC, 50TC**  
7.5 to 27.5 Tons  
**WeatherMaker® 50TCQ**  
7.5 to 20 Tons



**WeatherMaker® with ecoblue™ technology 48FC, 50FC, 50FCQ**  
3 to 6 Tons

### Applied Rooftop Units



**WeatherExpert® 48/50N Series**  
75 to 150 Tons



**WeatherMaster® 48/50P Series**  
30 to 100 Tons



**WeatherMaker® 48/50A Series**  
20 to 60 Tons

### Small Packaged Products



**Performance™ 50VG**  
Packaged Air Conditioner  
**Performance™ 48VG**  
Packaged AC/Gas Heat  
**Performance™ 50VR**  
Packaged Heat Pump  
**Performance™ 48VR**  
Packaged HYBRID HEAT® Dual Fuel System



**Comfort™ 50VL**  
Packaged Air Conditioner  
**Comfort™ 48VL**  
Packaged AC/Gas Heat  
**Comfort™ 50VT**  
Packaged Heat Pump  
**Comfort™ 48VT**  
Packaged HYBRID HEAT® Dual Fuel System

## packaged products continued



**Comfort™ 50ZP**  
Packaged Air Conditioner  
**Comfort™ 50ZH**  
Packaged Heat Pump

### Indoor Self-Contained Systems



**Omnizone™ 50XC Water-Cooled/Air-Cooled/Remote Air-Cooled**  
5 to 20 Tons



**Omnizone™ 50BV Water-Cooled**  
18 to 60 Tons

## water source and geothermal heat pumps



**Aquazone™ 50PCH, 50PCV Compact Units**  
0.5 to 6 Tons



**Aquazone™ 50PSH, 50PSV Horizontal/Vertical Upflow**  
0.5 to 6 Tons



**Aquazone™ 50PTH, 50PTV Horizontal/Vertical Upflow**  
2 to 6 Tons



**Aquazone™ 50PSW Water-to-Water Units**  
3 to 35 Tons



**Aquazone™ 50HQP Horizontal Large Capacity**  
6 to 20 Tons  
**Aquazone™ 50VQP Vertical Large Capacity**  
6 to 30 Tons



**Aquazone™ 50PEC Console Units**  
0.75 to 1.5 Tons

## energy recovery



**EnergyX® System Energy Recovery Ventilator (ERV)**

## dedicated outdoor air products



**62X Air-Cooled DOAS Units**  
3 to 55 Tons